

Steps for changing the OS_AUTHENT_PREFIX in Oracle database for adding windows/ Domain user.

=====

1. Connect to the oracle database in which database you want to modify the changes.

```
SQL> Sqlplus username/password@databasename;
```

2. Check the parameter OS_AUTHENT_PREFIX.

```
SQL> show parameter OS_AUTHENT_PREFIX;
```

3. If the OS_AUTHENT_PREFIX parameter is Not NULL, then set the parameter with the following command if using spfile.

```
SQL> alter system set OS_AUTHENT_PREFIX='' scope=spfile;
```

4. Restart the service of the Database.

5. Again check the parameter OS_AUTHENT_PREFIX. It should show below.

```
SQL> show parameter OS_AUTHENT_PREFIX;
```

NAME	TYPE	VALUE

os_authent_prefix	string	

6. Check the parameter REMOTE_OS_AUTHENT

```
SQL> show parameter REMOTE_OS_AUTHENT
```

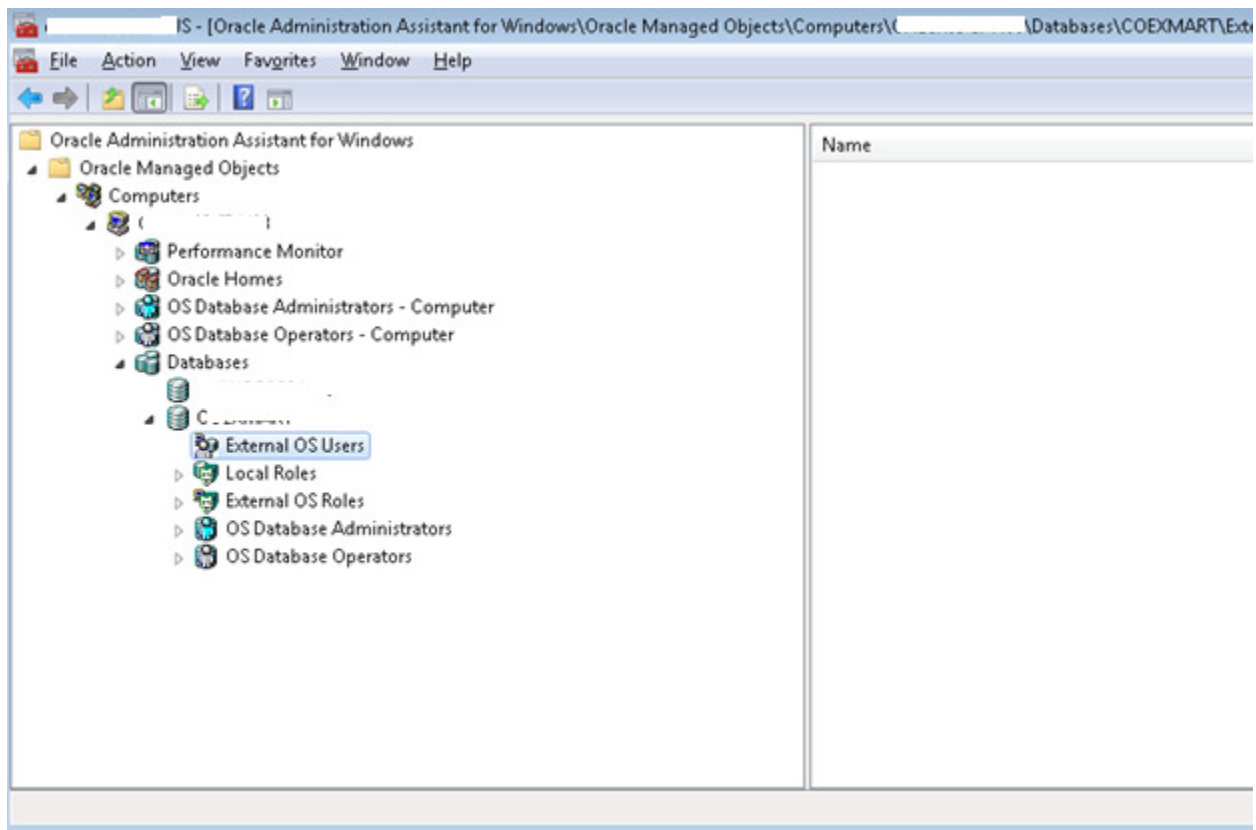
7. If the REMOTE_OS_AUTHENT parameter is FALSE (don't allow OS authentication) set the parameter to TRUE with the following command if using spfile:

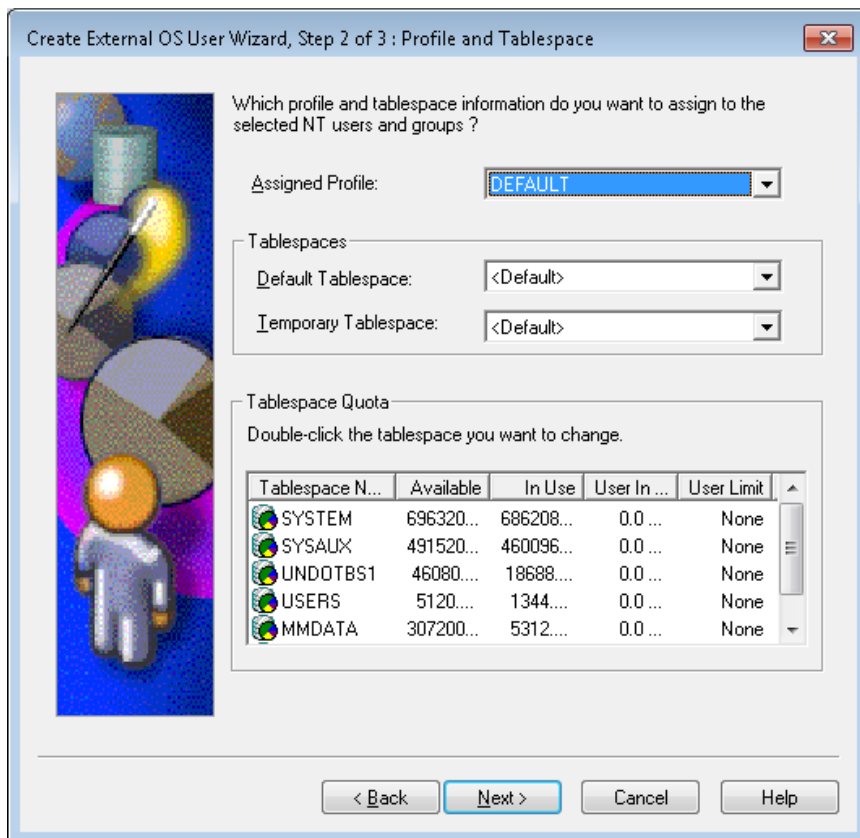
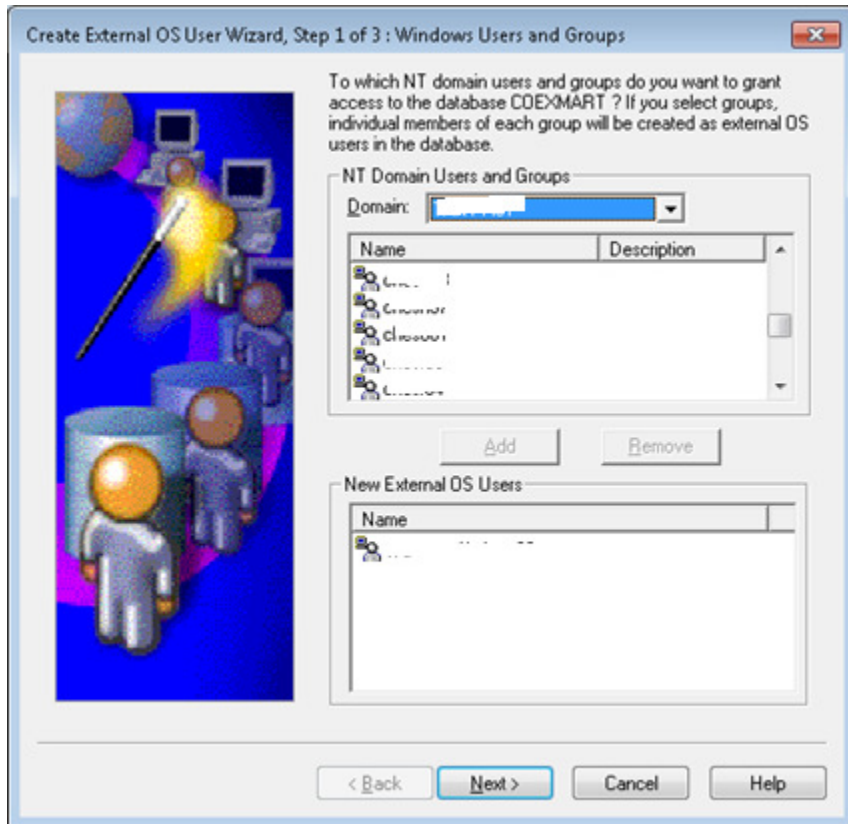
```
SQL> alter system set REMOTE_OS_AUTHENT=TRUE scope=spfile;
```

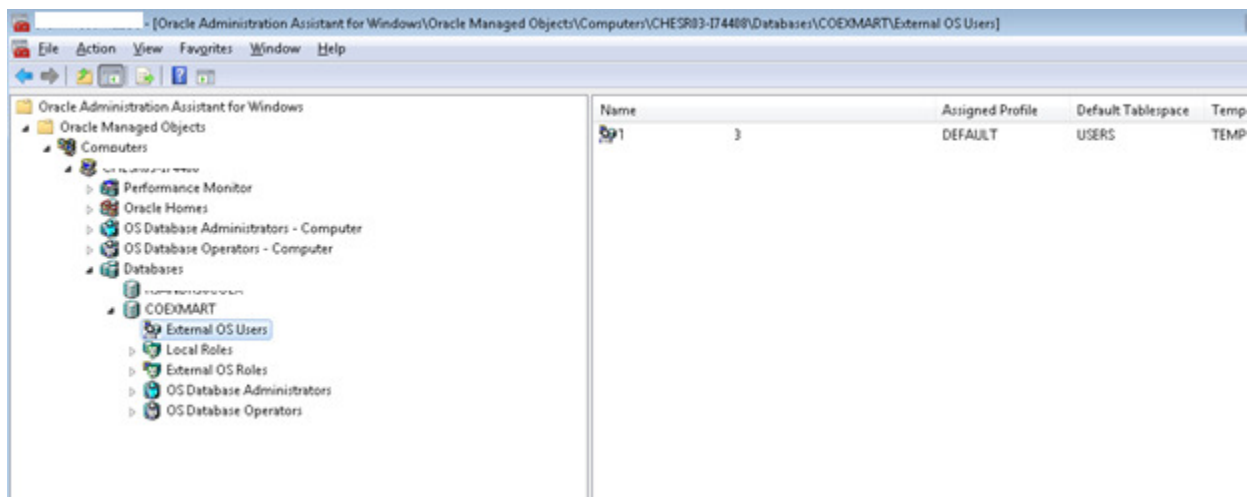
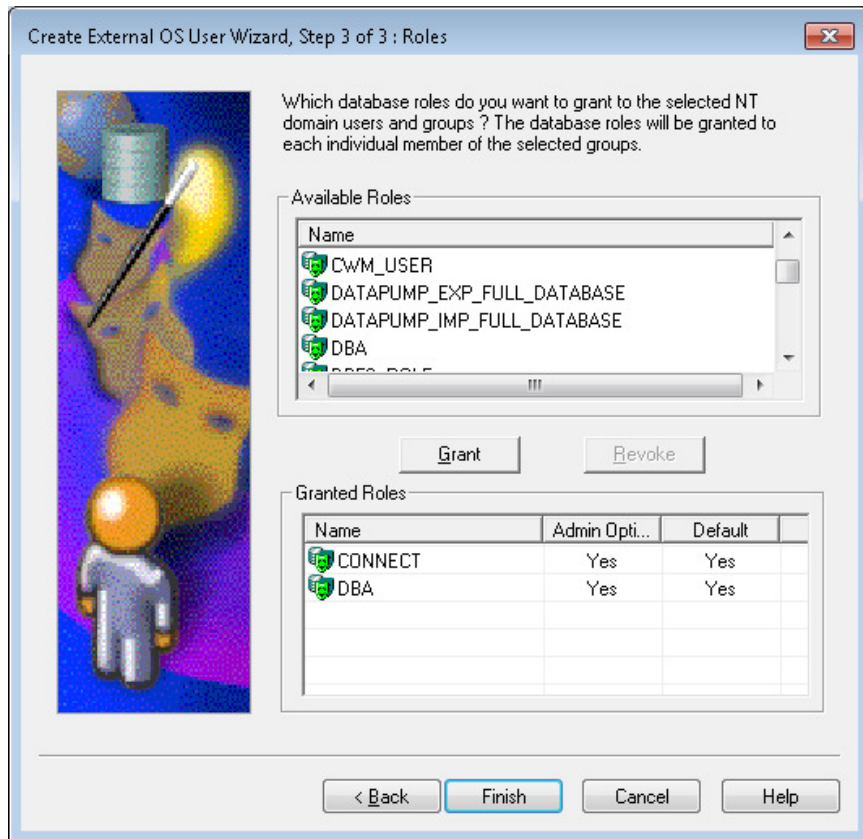
Steps for adding the windows/ Domain users to Oracle DB through UI.

=====

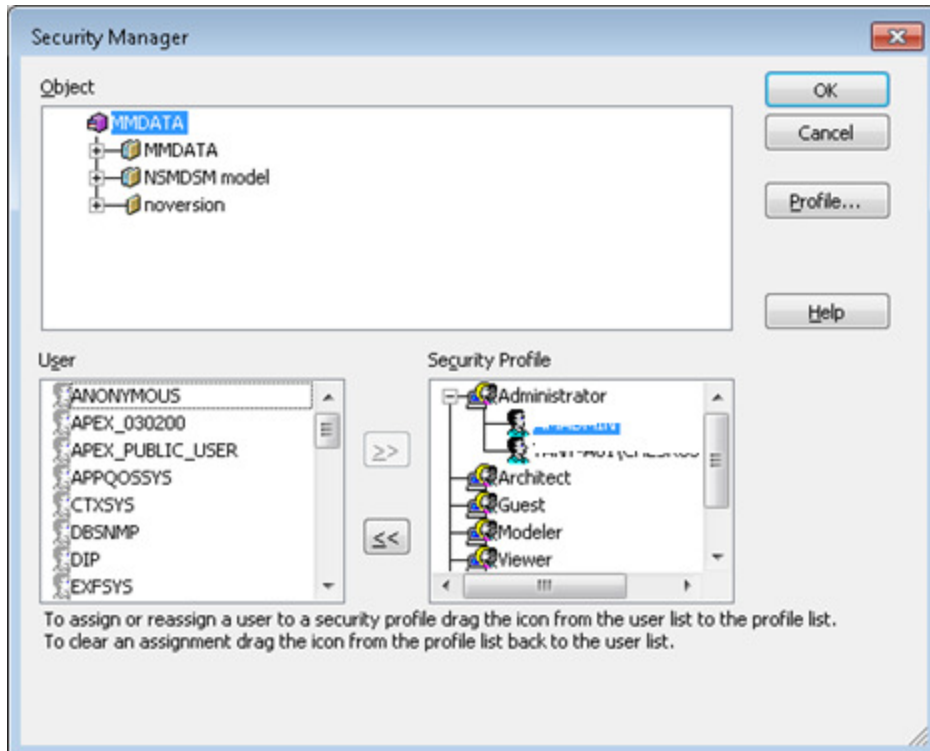
1. Open Oracle Administration Assistant for Windows.
2. Go to databases and select the database and connect in which you want to add windows / domain user.
3. Expand the database and select "External OS Users" and right click and select "Create" and follow the below screens.







4. After created the windows/Domain user in oracle DB, add that user in r8.x Mart.



5. After added Windows/Domain user to r8.x mart we should follow the normal Mart Upgrade utility process for upgrading the users, Profiles, Models etc... to r9.6 Mart.

Steps for adding the windows / Domain Users in Oracle DB through SQLPLUS.

=====

1. SQL> create user "<MACHINENAME or DOMAIN NAME>\USERNAME" identified externally;

Make sure keep the hostname and username in capitals.
2. SQL> grant connect, resource, create session to "<MACHINENAME or DOMAIN NAME>\USERNAME";
3. SQL> grant dba to "<MACHINENAME or DOMAIN NAME>\USERNAME";