

How to Generate Mart Reports using SAP Crystal Reports 2011

Use this procedure to generate Mart reports using SAP Crystal Reports 2011.

Follow these steps:

1. From the Windows Start Menu, click All Programs, Crystal Reports 2011, Crystal Reports 2011.
2. Click File, Open. Browse and select any report (Ex: From global report directory, Libraries.rpt is selected) from the following location:

For XP Machine:

```
{User.home} \Local Settings\Application Data\CA\ERwin Data Modeler\9.0\Mart Reports\
```

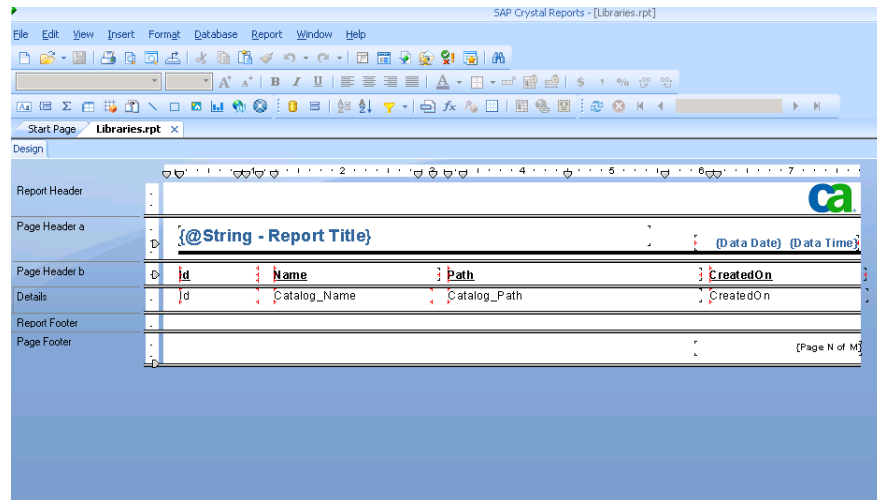
For Win 7 Machine:

```
{user.home}\AppData\Local\CA\ERwin Data Modeler\9.0\Mart Reports
```

A message appears informing you that the file opens as a read-only file.

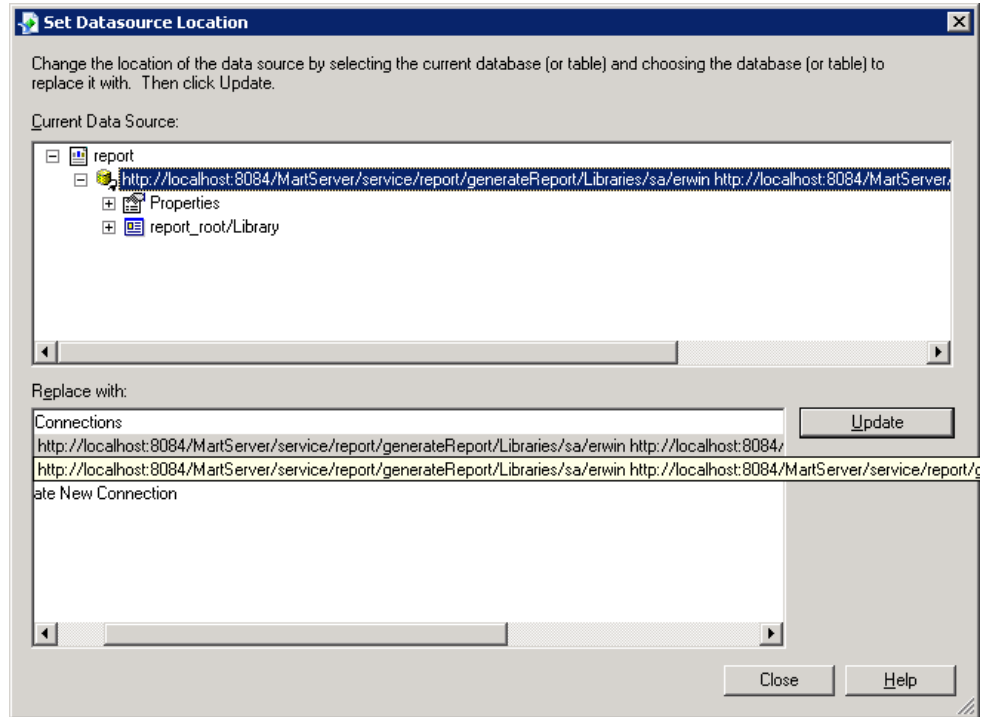
3. Click OK on the message.

SAP Crystal Reports appears with the Libraries.rpt file open.



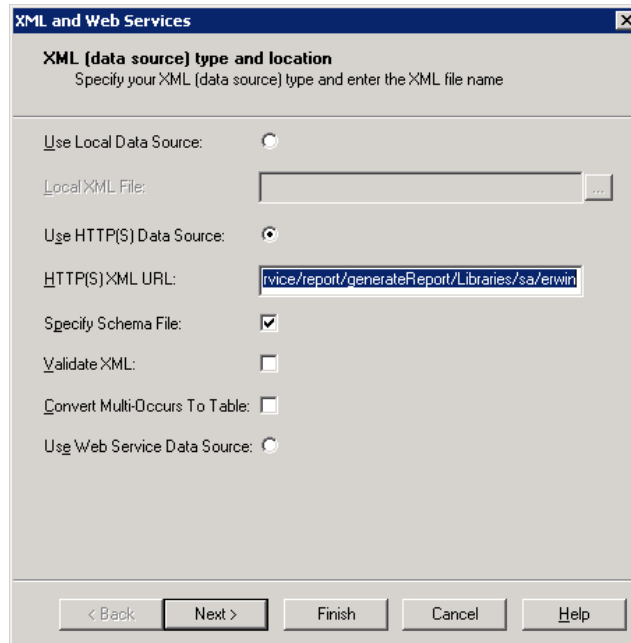
4. Click Database, Set Data Source Locations.

The Data Source Location dialog opens.



5. Click Update.

The XML (data source) type and location dialog opens.



6. Change HTTP(S) XML URL.

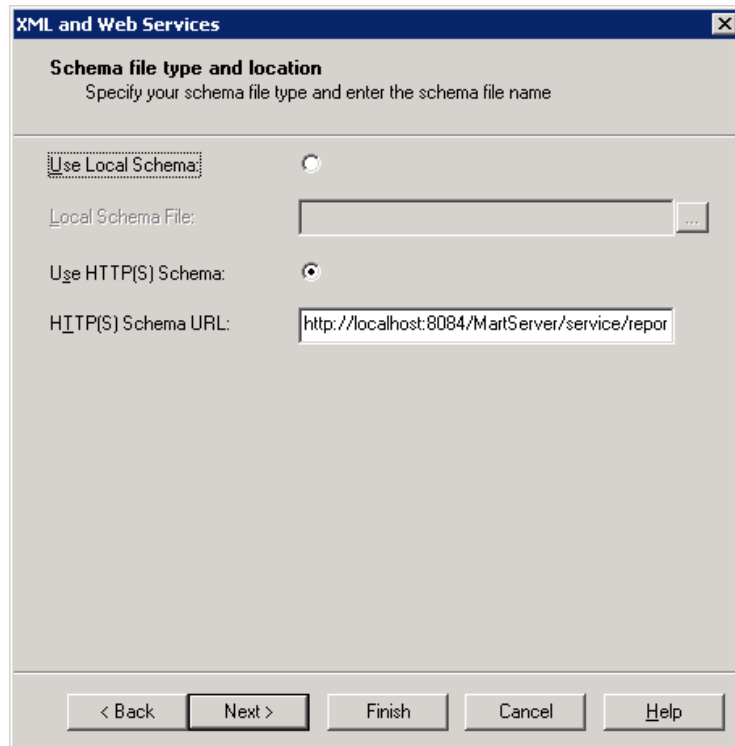
The format of the URL is Machine Name, Port, AppName, User Name and Password
Change from:

http://localhost:8084/MartServer/service/report/generateReport/Libraries/sa/erwin

To:

http://ServerName:Port/ApplicationName/service/report/generateReport/Libraries/User/Password

7. Click Next till you get the Schema file type and location dialog.



8. Change HTTP(S) XML URL.

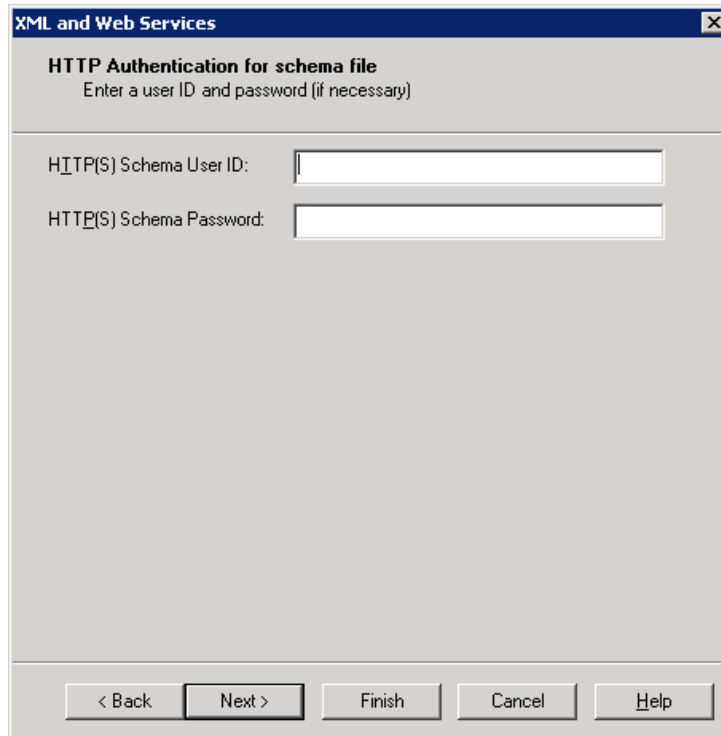
The format of the URL is *Machine Name, Port, AppName, User Name and Password*.
Change from:

http://localhost:8084/MartServer/service/report/generateSchema/Libraries/sa/erwin

To:

http://ServerName:Port/ApplicationName/service/report/generateSchema/Libraries/User/Password

9. Click Next.



XML and Web Services [X]

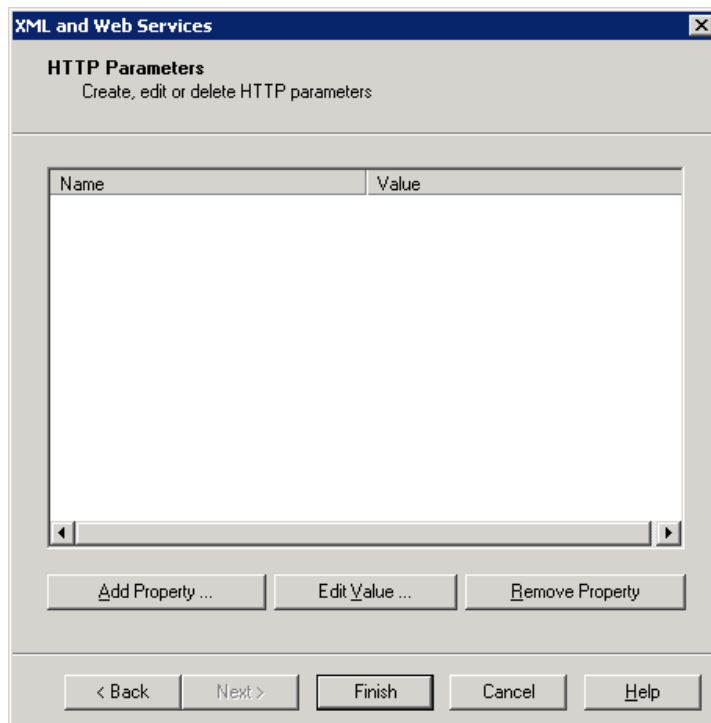
HTTP Authentication for schema file
Enter a user ID and password (if necessary)

HTTP(S) Schema User ID:

HTTP(S) Schema Password:

< Back Next > Finish Cancel Help

10. Click Next.



XML and Web Services [X]

HTTP Parameters
Create, edit or delete HTTP parameters

Name	Value
------	-------

Add Property ... Edit Value ... Remove Property

< Back Next > Finish Cancel Help

11. Click Finish.

12. Press F5 and the report appears.

